

ST. JOSEPH MISSOURI

— OFFICIAL VISITOR GUIDE —



ST. JOSEPH
★ MISSOURI ★
STJOMO.COM

"Where History Actually Happened"

PATEE HOUSE MUSEUM

1858 Pioneer Hotel

**National Historic Landmark
Pony Express Headquarters**

**UNION ARMY PROVOST
MARSHAL'S OFFICE**



The house where Jesse James
was killed in 1882



**12th & Penn Streets
816-232-8206**

www.ponyexpressjessejames.com

"One of America's Top Ten Western Museums"
– True West Magazine

- Explore the Streets of Old St. Jo and Pony Express Headquarters
- Visit the Buffalo Saloon
- Ride the Carousel
- View the Western Art Collection



**ST. JOSEPH
MISSOURI**
www.StJoMo.com



DOWNTOWN Saint Joseph HISTORIC MISSOURI

Photos courtesy of Lura Landis Photography and Coverage Photography.



SCAN TO



EAT, DRINK,
SHOP &
EXPERIENCE
DOWNTOWN
ST. JOSEPH!



Visit www.downtownstjoemo.com for the latest events and up-to-date business listings



WELCOME TO ST. JOSEPH!

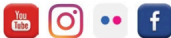


The Official St. Joseph Visitor Guide

ST. JOSEPH CONVENTION & VISITORS BUREAU
under the administration of the Buchanan County Tourism Board
911 Frederick | St. Joseph, MO 64501
816-233-6688 or 800-785-0360

Visitors Center
502 N. Woodbine | 816-232-1839
www.stjomo.com

Visit St. Joseph, MO Social Media
[youtube.com/stjouisouricvb](https://www.youtube.com/stjouisouricvb)
[instagram.com/visitstjomo](https://www.instagram.com/visitstjomo)
[flickr.com/photos/stjocvb](https://www.flickr.com/photos/stjocvb)
[facebook.com/stjomo](https://www.facebook.com/stjomo)



ST. JO AT A GLANCE

| | |
|-------------------|------------------------------------------|
| County Population | 89,486 |
| Area | 44.6 square miles |
| Altitude | 813 feet above sea level |
| Coldest Month | January-Average 24.9°F |
| Hottest Month | July-Average 87°F |
| Climate | St. Joseph enjoys four distinct seasons. |

LOCAL CONTACTS

| | |
|--------------------------------------------------|---------------------------------|
| St. Joseph Convention & Visitors Bureau | 816-233-6688 or 800-785-0360 |
| St. Joseph Visitors Center at East Hills Library | 816-232-1839 |
| Film Division | 816-233-6688 |
| Buchanan County Courthouse | 816-271-1412 |
| City Hall | 816-271-4730 |
| Missouri Division of Tourism | 800-413-7300 |
| St. Joseph Chamber of Commerce | 816-232-4461 |
| St. Joseph Civic Arena | 816-271-4717 |
| St. Joseph News-Press | 816-271-8500 |
| St. Joseph Parks and Recreation Department | 816-271-5500 |
| Time and Temperature | 816-279-7777 |

From the Cover



An authentic 1860 locomotive sitting inside the Patee House Museum. This particular locomotive was the last of its kind to ride the Hannibal and St. Joseph Railroad, which was the railroad that carried mail into St. Joseph for its eventual departure on the Pony Express. Visit the Patee House Museum for more information.

CONTENTS

- 4 Welcome to St. Joseph!
- 6 St. Joseph: A Destination that Delivers
- 8 An Emerging Destination for Families
- 12 King of the Trails
- 14 Discover Downtown
- 16 Attractions
- 22 Annual & Seasonal Events
- 30 Sports & Recreation
- 36 St. Joseph Map
- 37 Tour Homes
- 38 Accommodations
- 40 Allied Arts



EXPLORE



St. Joseph

A DESTINATION THAT DELIVERS



Legendary Tales in St. Joseph, MO

For centuries, the story of westward expansion has fascinated and inspired storytellers, adventurers, and dreamers. From the boundless optimism of pioneers to the daring exploits of outlaws and trailblazers, the West's rich tapestry of history continues to fuel our collective imagination. St. Joseph invites you to follow those who shaped America's frontier spirit and uncover stories that connect the past with the present.

The Riders that Shaped the West

No event in American History has captured the imagination of young and old more than the Pony Express. This daring relay system, founded in 1860, called young men to ride horses and carry mail 2,000 miles westward in record time. Experience the ride at the **Pony Express Museum** or visit the historic **Patee House**, once the Pony Express headquarters and now a National Landmark Museum with immersive exhibits, including an 1860 train and vintage carousel.



Patee House Museum



Patee House Museum

An Outlaws Final Chapter

The outlaw Jesse James spent his last days in St. Joseph, Missouri, before his fellow gang member Bob Ford shot him for a bounty in 1882. Explore the legendary sights, starting with the **Jesse James House**, and see the famous bullet hole and artifacts. On the same grounds is the **Patee House Museum**, where his family stayed after his death. See the **Buchanan County Courthouse**, where the Ford brothers were indicted, and the **Missouri Valley Trust Building**, rumored to be “cased” by James himself.



Jesse James House

Family Friendly Fun

Go beyond the past and bring the kids to the **Remington Nature Center** to explore the fascinating intersection of history and nature with exhibits that showcase local wildlife and the region’s storied past. Then, take interactive learning to the next level at The **InspireU Children’s Discovery Center**. Hands-on exhibits designed to inspire creativity, spark curiosity, and promote wellness take interactive learning to the next level.



Remington Nature Center

Your Next Great Story Starts Here

St. Joseph is the muse you’ve been waiting for with its legendary, larger-than-life tales and authentic Wild West spirit. Pack your notebook and head to this family-friendly destination that blends education, entertainment, and adventure.

Plan your trip today at stjomo.com





inspireU Children's Discovery Center

An Emerging
Destination
For Families

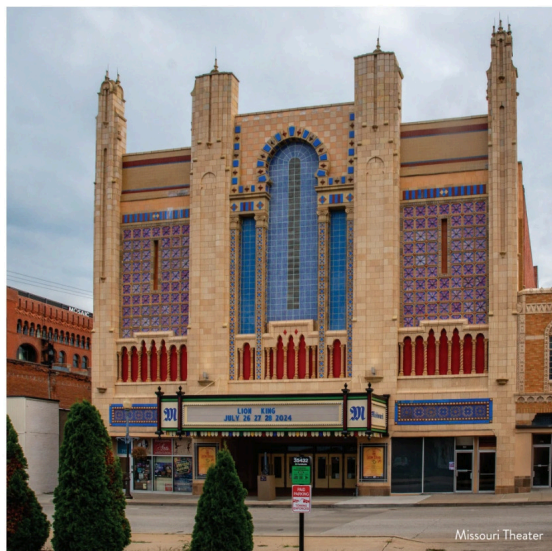
New experiences are popping up, long-time favorite attractions find ways to expand, and even more growth appears to be on the horizon. St. Joseph just might be the hidden gem your family has been looking for. In no particular order, here are a few places worth checking out if you're on the hunt for fun, affordable places to take the kids:

inspireU Children's Discovery Center

This new, state-of-the-art children's discovery center is packed with exhibits and places to explore for kids aging from birth to 10-years-old. While it boasts climbing towers, a water table, creation stations, and even a rooftop space for when the weather is nice, it also has a number of quiet spaces and guarded crawl areas to make any child (and parent) feel comfortable.

MUSEUMS

A visit to St. Joseph isn't complete without attending at least one of its museums, many of which have plenty to offer for families. Walk the original stable grounds of the Pony Express at the Pony Express National Museum, see multiple living animals native to the region at the Remington Nature Center, or take one of the numerous art classes offered at the Albrecht-Kemper Museum of Art. Many more offerings from our local museums can be found at stjomo.com.



MISSOURI THEATER

You'd be on the road for quite some time before running into another theater like this. Soon to be coming up on its centennial celebration, the Missouri Theater is undoubtedly the architectural gem of the city. Once built as a movie palace, it now hosts numerous plays, musicals, symphonies, concerts, and other performances throughout the year. While planning your visit, check the events calendar at stjomo.com/events to see what performances will be happening.

HIKE & BIKE TRAILS

St. Joseph might be known as King of the Trails from a historic perspective thanks to Lewis & Clark, the Pony Express, and the Oregon Trail, but it's also a talking point for hikers, mountain bikers, and general fans of the outdoors. For those wanting to take it slow, there are a number of well-marked paved routes throughout town. Our historic parkway system is second to none. For the ones ready to hit steep pro lines or a professional grade pump track, St. Joseph has you covered. Stop in one of our local bike shops for the best recommendations to match the ages and skillsets of your family.



Eat and drink in St. Jo!



Prime Rib/Hand Cut Steaks
Safad Bar after 4pm
New Specials Daily

Since 1980

- Lunch - Tues-Fri: 11am-3pm
- Dinner - Tues-Thurs: 4pm-8:30pm
- Fri & Sat 4pm-9:30pm
- Closed Sun & Mon

www.fredrickinnsteakhouse.com

B & B
RUNWAY CAFÉ
 at Rosecrans Memorial Airport

100 NW Rosecrans Road
816-344-1146
Facebook.com/bnrunwaycafe
 @bbrunwaycafe

BEN MAGOON'S DELICATESSEN

632 S. 8th Street, St. Joseph MO 64501 • 816-232-3611 • www.facebook.com/shrkbyte

Belly's Cafe

HOME STYLE COOKING FAMILY DINER!

Come hungry. leave happy.

Find us on Facebook

6507 King Hill Avenue | Saint Joseph, MO 64504
(816) 238-9847

ST. JOSEPH'S
 AWARD WINNING BREWERY.

DOWNTOWN ST. JOE & KANSAS CITY.

BEER CLUB

VISIT THE HOLLADAY DISTILLERY IN HISTORIC WESTON, MISSOURI

Holladay
 SPRINGS

HOLLADAYDISTILLERY.COM **HOLLADAY1856**

© 2024 Distilled, Aged, and Bottled by Holladay Distillery Weston, MO. 50% alc./vol. (100 Proof). Drink Responsibly. Drive Responsibly.

Escape

TO A TRANQUIL GARDEN

Just a few steps away, find our garden filled with beautiful decor, gifts and ladies' apparel. Let the inspiration of the room-like settings help you to bring the peace of our garden to your home.



Tuesday-Saturday
10am-6pm

811 North Woodbine Road
Saint Joseph, MO

(816) 364-3535



KING OF THE TRAILS

The Journey West Statue



“ St. Joseph is a modern wonder, a city of 60,000 inhabitants, eleven railroads, 70 passenger trains each day, 170 factories, thirteen miles of the best paved streets, the largest stockyards west of Chicago, a wholesale trade as large as that of Kansas City and Omaha combined.”

— CHICAGO TIMES 1886

If you were heading into what was considered the “wild west” in the 1800’s, you most likely were going to go through St. Joseph. Whether you needed clothing, tools, wagons, etc., what better place to get outfitted than the jumping-off point of some of the most legendary trails in American history?

LEWIS AND CLARK EXPEDITION

Meriwether Lewis and William Clark camped on the banks of the Missouri River and made a note in their journal on September 16, 1806 about meeting a “young Mr. Bobidoux” who traded with native tribes in the area. The gentleman they met is believed to have been Joseph Robidoux, who would eventually be recognized as the founder of St. Joseph. Twenty years after his encounter with Lewis



Pony Express National Museum

and Clark, he established the Blacksnake Hills trading post. The trading post blossomed into a fur-trading empire that stretched to the southern Rocky Mountains, essentially laying the groundwork for routes that would later guide hundreds of thousands of settlers.

PONY EXPRESS

In 1848, the discovery of gold in California was the catalyst this new Missouri town needed and became a starting point for those destined on a journey west. The railroad reaching St. Joseph in 1859 further accelerated the city's growth as a critical point of supply and distribution to nearly the entire western half of the country. With the U.S. at a height of political tension entering its Civil War, St. Joseph naturally made the most sense as the headquarters and eastern terminus for the Pony Express, the famed mail-carrying services that brought



Pony Express Statue

communication to the west in record time.

Looking back now, it's no wonder St. Joseph had more millionaires per capita than any other U.S. city for a time in the late 19th century. It was trails of fur traders and explorers that eventually made the west what it is today. St. Joseph, as a town built by trailblazers, profited more than any other U.S. city at the time on the thrill of heading west.

For the most up-to-date information on businesses, attractions, events, and other experiences, visit stjomo.com.



DISCOVER Downtown

“If these walls could talk” is a phrase regularly muttered among dozens of buildings in downtown St. Joseph. We often hear visitors ask, “what’s the story behind all these beautiful downtown buildings?” The truth is each one has its own story, many of which are still being written. While St. Joseph prides itself on the trailblazing spirit and resiliency of residents in its history, the residents today are the ones keeping that energy alive.



SHOPPING

A number of locally owned retail shops can be found across downtown. Boutiques, book stores, gift shops, home décor, antique and vintage shops, and locally made items can all be found within walking distance of each other.

FOOD & DRINK

Dozens of restaurants, bars, coffee shops, and specialty places line downtown streets as well as down Frederick Avenue. Don't hesitate to ask a local about tenderloins. St. Joseph has been discussed in recent years as the Tenderloin Capital of the World.



ART

You can't walk downtown without noticing multiple murals, statues, or sculptures. Grabbing a Sculpture Walk map at the St. Joseph Convention & Visitors Bureau and venturing out to see them all is one of the best ways to see downtown. It doesn't get any better than free and available 24/7, 365 days a year.

SPORTS

St. Joseph is on the rise as a host city for a number of sporting events. The Civic Arena on 4th Street will see a variety of high school, collegiate, and professional level events throughout the year. The St. Joseph Missouri Marathon begins and ends downtown as well. To see when the next event is taking place, visit stjomo-sports.com.

ARCHITECTURE

Of course, going on a walk is a great way to see buildings from the outside, but there are several historic home tours and other events throughout the year to give you a deep dive on architecture in St. Joseph. Dozens of these locations can be found on the National Register of Historic Places.

ATTRACTIONS





Missouri Theater

AGENCY FORD MUSEUM

11351 Highway FF, Agency, MO
816-390-2023

A former school, this museum documents the history of Agency, a once-thriving community, from the 1836 Platte Purchase to the present. Open by appointment and during all Agency city events.

ALBRECHT-KEMPER MUSEUM OF ART

2818 Frederick Ave.
816-233-7003

albrecht-kemper.org
Houses one of the finest collections of American Art in the Midwest. The historic home is a perfect backdrop for works by Mary Cassatt, Robert Henri and Thomas Hart Benton. This is a Blue Star Museum. Hours: Tuesday – Friday, 10 a.m. – 4 p.m.; Saturday – Sunday, 1-4 p.m. Adults \$10; Seniors \$8, Students with a Valid ID are \$7, Children under 6 and AKMA Members are FREE.

ANDREW COUNTY MUSEUM

202 E. Duncan Dr., Savannah, MO
(Just 15 minutes north of St. Joseph in Savannah, MO. Take Bus 71/59.)
816-324-4720

andrewcountymuseum.org
A Rural Way of Life: Explore 175 years of life in the small towns and family farms of the Midwest, starting with the 1840s. Visit a 19th century general store, view a 'silent' movie, discover how farming has changed through the years, and so much more. Discover more through our temporary exhibits, guest speakers, special events, educational programs and activities, and do research with our Genealogy Department. Tuesday – Saturday 10 a.m.-4 p.m. Closed Sunday & Monday. Blue Star Museum. ADA accessible. Wheelchair available. Veterans and Children Under 12 are free.

BLACK ARCHIVES MUSEUM

3406 Frederick Ave.
816-232-8471

stjosephmuseum.org
The Black Archives Museum honors the struggles and triumphs of St. Joseph and Buchanan County African Americans. Exhibits explore such topics as Slavery in Missouri, Before We Were Soldiers 1840s-1850s, Colored Soldiers in the Civil War, and the local impact of the national Civil Rights era. The Museum also includes the Black Archives Museum Hall of Fame, which showcases the achievements and contributions of St. Joseph's Black community members in a wide variety of areas. Open 10 a.m. – 5 p.m. Monday - Sunday. Closed on major holidays. Check the website for pricing. Admission includes the Glore Psychiatric Museum and the St. Joseph Museum.

BUCHANAN COUNTY COURTHOUSE

411 Jules St.
816-271-1412

co.buchanan.mo.us
The courthouse, on the National Register of Historic Places, is an architectural gem of the city. The Ford Brothers were tried here for the killing of Jesse James. Free admission. Open during regular business hours.

BUSHMAN PLANETARIUM

MWSU, 4525 Downs Dr.
816-271-4288

missouriwestern.edu/planetarium
Bring your family and explore our universe, from starry skies to microscopic life forms. The Bushman Planetarium is located inside Agenstein Hall on the Missouri Western State University campus. Adults \$5, Children, Students, Military and Seniors \$3. Shows last approximately one hour.

GLORE PSYCHIATRIC MUSEUM

3406 Frederick Ave.
816-232-8471

stjosephmuseum.org
Voted one of the top 10 attractions in Missouri in a USA TODAY® Readers' Choice travel contest, the Glore Psychiatric Museum illustrates the changing face of the treatment of mental illness and social attitudes towards mental health. Exhibits illustrate the history of "State Lunatic Asylum No. 2" hospital, later known as the St. Joseph State Hospital. Open 10 a.m.-5 p.m. Monday - Sunday. Closed on major holidays. Check the website for pricing. Admission includes the Black Archives Museum and the St. Joseph Museum.

inspireU Children's Discovery Center

521 Felix St.
(816) 271-4900

inspireu.com
A new, state-of-the-art children's discovery center dedicated to fostering physical health, mental wellness and educational enrichment. This 50,000 square foot attraction features 20 exhibits, a rooftop Exploratorium, interactive play areas, and educational spaces for families with children ages birth to 10. Positioned within walking distance to numerous shops, restaurants, and event spaces.

JESSE JAMES MUSEUM

1202 Penn St.
816-232-8206

ponyexpressjessejames.com
Outlaw Jesse James was killed here April 3, 1882 by gang member Bob Ford. See artifacts from Jesse's grave. Located next to Patee House Museum. April - October open Monday - Saturday 9 a.m.- 4 p.m., and Sunday 12 p.m.- 4 p.m.; November - March, visit website or call to inquire. Adults \$5; Seniors (60+) \$4 ; Students (17 and under) \$3; Kids 5 & under Free.

LOVERS LANE

facebook.com/
loverslanehistoricallandmark

A beautiful, winding road immortalized by Eugene Field in the poem "Lovers Lane, Saint Jo." Today, the site of many fine homes, it was a remote country road and where Field courted his future wife, Julia Comstock.

MISSOURI THEATER

717 Edmond St.
816-271-4717

facebook.com/missouritheater
stjoearts.org/missouri_theater
A renovated 1927 Paramount Studios movie palace which now serves as a regional center for the arts. This architectural gem is on the National Register of Historic Places. Tours by appointment.



While in St. Joseph Find Your Art-Venture

Learn more at
stjoearts.org



MOUNT MORA CEMETERY

824 Mount Mora Rd.
816-232-8471

mountmora.org

Established in 1851, Mount Mora is one of the oldest operating cemeteries and is listed on the National Register of Historic Places. Beautifully designed on 20 acres, it includes 30 mausoleums, burial plots of 3 Missouri Governors, Civil War Veterans, 2 Pony Express riders and an English Baronet.

PATEE HOUSE MUSEUM

1202 Penn St.
816-232-8206

ponyexpressjessejames.com

1858 Patee House Hotel was the headquarters for the Pony Express, and the Civil War Union Provost Marshal's office. Includes Carousel, Buffalo Saloon, Western Art, Jesse James. April-October open Monday - Saturday 9 a.m.- 4 p.m., and Sunday 12 p.m.- 4 p.m.; November- March, visit website or call to inquire. Adult \$8, Seniors (over 60) \$7, Students (ages 6-17) \$5, Kids 5 & under Free. Carousel rides: \$1.50 or 4 rides for \$5.

PONY BAR AND GOETZ MUSEUM

914 Penn St.
816-279-5059

www.ponyexpress.org/

pony-bar-and-goetz-museum

The Pony Bar, formerly Bill's Bar, has been restored to its 1922 glory. The Pony Bar houses the Goetz Museum, exhibiting photos, artifacts, and stories of the Goetz family, Goetz Brewery, and the neighborhood formerly known as Patee Town, Goose Town, and Blue Town. Contact museum for special event venue information. Available for catering. \$5 admission. See website for hours.



PONY EXPRESS MONUMENT

910 Frederick Ave.

The larger-than-life bronze statue of a Pony Express rider was dedicated in 1940. Sculptor Herman A. MacNeil's work commemorates the pioneer spirit exhibited when the Pony Express began in 1860.

PONY EXPRESS NATIONAL MUSEUM

914 Penn St.
816-279-5059

ponyexpress.org

The famous mail service began here on April 3, 1860. State-of-the-art exhibits illustrate need, creation, operation and termination of the Pony Express. Enjoy the One-Room Schoolhouse, Hall of Riders exhibit, and brand new Goetz Bar Museum. Hours: Monday - Saturday, 9 a.m.-5 p.m. Winter hours: December 1-

March 1, 9 a.m.-4 p.m. Sunday hours 11 a.m.-4 p.m. Pony School by appointment. Admission: Adult \$8, Senior \$7, Student (7-17) \$4, Kids (4-6) \$2, 3 & under Free. Museum Members Free. Special group prices.

REMINGTON NATURE CENTER

1502 McArthur Dr.
816-271-5499

www.stjoenaturecenter.info

The Remington Nature Center is where history and nature collide! See a life-size reproduction of a woolly mammoth, a 7,000-gallon aquarium of native Missouri fish, live reptile room, and learn more about the early history of St. Joseph. Hours-Mon-Sat, 10 a.m.-5 p.m., Sun, 1-5 p.m. Admission-Adults \$4, Seniors 60+ \$3, Youth ages 4-15 \$2, & Children 3 & under are FREE.

ROBIDOUX ROW MUSEUM

219 E. Poulin St.
816-232-5861

Robidouxrowmuseum.net

Come take a "Step Back in Time" with the Robidoux Row Museum. Located in Saint Joseph's oldest building, the museum displays the history of Saint Joseph and Westward Expansion. The Robidoux Row was built in the 1840s by Joseph Robidoux to house pioneers and settlers during the Wagon's West Movement. The museum includes restored and immersive living quarters along with displays cataloging Saint Joseph history from pre-settlement to the Golden Age. Immerse yourself in Saint Joseph history and find your pioneer spirit. Hours May-September: Wednesday - Saturday 10 a.m.-4 p.m., October - April: Wednesday - Saturday 1 p.m.-4 p.m. (Closed January and February.) Adults: \$4, Senior \$2, Student (6-18) \$1, 5 and under Free. Rental rooms available.

inspireU

CHILDREN'S DISCOVERY CENTER

Perfect for all families Areas for children 0-10

MOSAIC
LIFE · CARE
FOUNDATION

KultureCity

MUSEUMS for ALL
an initiative of the
Institute of Museum and Library Services



ST. JOSEPH
★ MISSOURI ★
www.StJoMo.com



Downtown St. Joseph

521 Felix Street, St. Joseph, MO

WWW.INSPIREU.COM





Pattee House Museum



Downtown St. Joseph



Mansion Hill

ST. JOSEPH MUSEUMS

3406 Frederick Ave.
816-232-8471
stjosephmuseum.org
The St. Joseph Museum features "Lines and Legacies – The Harry L. George Collection," which is one of the largest collections of American Indian items in Missouri. The collection includes archaeological items, pottery, baskets, pipes, clothing and accessories from ten cultural regions. Blankets from the Buell Manufacturing Company of St. Joseph, which was incorporated in 1877, are also featured. The Buell Woolen Mill was the primary source for high quality blankets headed west. The blankets were strikingly colorful and many designs were based on patterns used by different Native tribes in paintings and bead work. The History Galleries features "World War I St. Joseph – Reflections on Community and Conflict." Open 10 a.m.-5 p.m. Monday - Sunday. Closed on major holidays. Check the website for pricing. Admission includes the Black Archives Museum and the Glore Psychiatric Museum.

WALTER CRONKITE MEMORIAL

Missouri Western
State University
4525 Downs Dr.
816-271-4200
wcm.missouriwestern.edu
The Walter Cronkite Memorial honors the legendary journalist and

St. Joseph native with interactive kiosks, photographs, news broadcast videos, artwork, and a replica of Cronkite's CBS news studio. Located inside Spratt Hall on the Missouri Western State University campus. Hours are Monday - Friday, 10:00am - 4:00pm. Free admission. Closed when University campus is closed. See website for details.

WYETH TOOTLE MANSION

of the St. Joseph Museums, Inc.
1100 Charles St.
816-232-8471
stjosephmuseum.org
Open seasonally from April-October
Features hand painted ceilings, ornate woodwork and stained-glass windows. Explore the newest temporary exhibit gallery at the Mansion which features artifacts that were among the first to be donated and exhibited in the 1920s and 1930s. This collection gives a glimpse into the past that is sure to spark great memories! On the third floor, Confluence: The Great Flood of 1993 depicts the impact of flooding on the area. The history of local architecture is shared through the Intersection of Time and Buildings exhibit and the Architecture of Edmond Eckel. Check website for admission pricing. Admission includes dual entry to The St. Joseph Museums and the Glore Psychiatric Museum.



Nature Displays



7,000 Gallon Aquarium

WHERE HISTORY & NATURE COLLIDE!

Remington Nature Center of St. Joseph

1502 McArthur Drive



(located across from St. Jo Frontier Casino off 229, Exit 7)

www.stjosephmo.gov/250/Remington-Nature-Center

816.271.5499

COUPON

Buy one adult admission, get one FREE.

Remington Nature Center of St. Joseph
1502 McArthur Drive

Limit one per family. Cannot be combined with other offers. Not redeemable for cash. Expires 3/31/2026.



ANNUAL & SEASONAL EVENTS

All events subject to change. Please check our calendar at StJoMo.com/events for up-to-date information.





Masquerade Ball



Super Science Saturday

YEAR ROUND

ST. JOSEPH SCULPTURE WALK

Downtown, St. Joseph
816-233-0231

stjoarts.org

The Sculpture Walk is an exciting exhibit of outdoor sculptures displayed year-round in downtown St. Joseph. Artists place their sculptures in the program for one year, allowing the public to vote for their favorite. Tour maps available at Allied Arts Council, 118 S. 8th St. or the CVB offices, 911 Frederick.

FEBRUARY

SUPER SCIENCE SATURDAY!

Second Saturday in February
Missouri Western State University
Agenstein/Remington Hall
4525 Downs Dr.
10 a.m. to 3 p.m.
816-232-8471

stjosephmuseum.org

How do you get your children excited about science and math? Treat them to the experience that is Super Science Saturday! They can solve the math maze, try biology, physics, chemistry, and weather experiments meet amazing creatures and much more! Presented by the St. Joseph Museums and Missouri Western State University, the hands-on activities related to math and science are presented courtesy of MWSU, KNPB and area high school instructors. Adults and Students \$5. Children five & under are FREE. Parking is FREE. All children must be accompanied by an adult.

PONY EXPRESS MUSEUM FAMILY DAY

Third Monday in February
Pony Express Museum
914 Penn St.
816-279-5059

ponyexpress.org

Family Day gives kids a chance to step back into the 1860's job of a Pony Express Rider. You can share the experience of the Pony Express legend with many educational, hands-on exhibits and activities during this family fun day! Activities will include popular items from Day Camp and crafts. Free admission on Presidents Day, 10 a.m.-3 p.m.

MARCH

ST. PATRICK'S DAY PARADE

Saturday Prior to St. Patrick's Day
Downtown, St. Joseph
along Frederick Ave.

The parade begins at Noyes Boulevard and Frederick Avenue and proceeds west towards downtown. Sponsored by the local Ancient Order of Hibernians.

APRIL

OUTLAW ADVENTURE 5K RUN

First Saturday in April
Heritage Park, 2202 Waterworks Rd.
816-271-5518

facebook.com/stjoutlawrun

This event is fun for individuals and groups and provides participants a chance to challenge themselves on unimproved trails and paved surfaces, as well as mastering obstacles strategically placed along the course. Bring your family and friends and enjoy the beauty of the Missouri River as

you challenge yourself to complete a new adventure!

MAY

APPLE BLOSSOM FESTIVAL

First Saturday in May
Downtown, St. Joseph
along Frederick Ave.
816-261-0422

appleblossomparade.com

Share the spirit of St. Joseph's annual rite of spring. City-wide festival includes queen contests and the ever-popular Apple Blossom Parade.

SOUNDS OF SUMMER CONCERTS

facebook.com/stjosephdowntownassociation

Every third Friday beginning in May and ending in October
Coleman Hawkins Park at
Felix Street Square, 701 Felix St.
Kick off the weekend with a free Friday evening concert with your family and friends listening to live music under the stars. Each free Friday night concert will feature a different band playing family friendly music. Bring a beach chair or blanket. For your convenience, snacks and drinks will be available for purchase. No coolers or outside alcohol permitted.

BEER WALK FOR THE ARTS

Second Saturday in May
816-233-0231

stjoarts.org

The ever popular Beer Walk for the Arts will take place 2-5 p.m. The committee is still working on the details, but be assured the event will feature music from local artists, unique beers paired with delicacies from local chefs and historic homes tours.

BLUFFWOODS RENAISSANCE FESTIVAL

Last day of May - First day of June
10 a.m. - 6 p.m.

Castle Bridge Event Center
8403 US-59,
Saint Joseph, MO 64504
(816) 248-2965

bluffwoodsrenfest.com

This family friendly festival is a celebration of the explosion of arts during the Renaissance era. It includes a fun filled weekend of musicians, dancers, daredevils, artists, vendors, and more. It even features a full contact horseback joust. All the performers and vendors will be dressed in fun clothing from the renaissance era, and many patrons enjoy dressing up as well. Simply come as you are, or come as you aren't!

JUNE

AKMA ART FAIR

First Saturday in June
Albrecht-Kemper Museum of Art
2818 Frederick Ave.
816-233-7003

albrecht-kiemper.org

Featuring fine artists from across the region, this the perfect moment to discover original artwork while supporting local artists. This event will also feature musical performances, food, a cash bar and more. Collectors and casual art enthusiasts alike will find unique pieces to suit a variety of tastes and price points.

JUNE CONT.

NORTHEAST FESTIVAL

First weekend in June
Krug Park, St. Joseph Ave.
Friday night, live music, vendors, crafts, fireworks, children's activities. Saturday: Parade, live music, Bikers for Babies drive-by, food, children's activities, vendors. Sunday: Dance performance, vendors, food, children's activities.

ALES WEST!

First Saturday in June
Coleman Hawkins Park at
Felix Street Square, 701 Felix St.
facebook.com/alesweststjoe
Ales West! is St. Joseph's craft beer festival. The festival features over 20 different craft breweries from the Midwest. Details are added/updated throughout the year on the facebook page.

IMAGINE ELEVEN CONCERT SERIES

Sundays, June 5 - August 14
Coleman Hawkins Park at
Felix Street Square,
701 Felix St.
imagineeleven.com
Eleven nights of great free live music, tasty value-priced food, and friends in a beautiful outdoor setting. Concerts 6-8:30 p.m.

HAWKFEST

Second weekend in June
Coleman Hawkins Park at
Felix Street Square, 701 Felix St.
colemanhawkins.org
Join in the celebration of St. Joseph's native son, Coleman Hawkins, with concerts by famed area jazz & blues musicians. Includes art vendors and concessions. Admission is free. Find us on facebook and twitter.

JUNETEENTH

Third weekend in June
816-232-8471
Throughout St. Joseph (Bartlett Center, Black Archives Museum, Downtown)
Come celebrate not only the signing of the Emancipation Proclamation but, Generals Orders number 3 during America's 2nd Independence Day! Celebration will feature: Gala, Parade, Basketball Tournament, Car Show, Festival, Family Picnic, Pageant, Live Music, Art show and much, much more! Don't miss this weekend long celebration! For more information contact the St. Joseph Museums at 816-232-8471 or sjm@stjosephmuseum.org

ANNUAL PONY EXPRESS RE-RIDE

Third Saturday in June
1202 Penn St.
816-232-8206
Annual re-ride by the National Pony Express Association ends in St. Joseph this year. More than 550 riders cover the 1,966-mile trail in 10 days. The ride will end at Patee House Museum on June 21 at 7:30 p.m.

JULY

KANSAS CITY CHIEFS TRAINING CAMP

Last week of July running through

the third week of August
Missouri Western State University,
4525 Downs Drive
Spratt Stadium Practice Complex
stjomo.com/kcchiefs
For the 12th consecutive year, St. Joseph is the proud summer training camp home of the Kansas City Chiefs! Around 15 public practices usually take place during the morning hours for up to two hours in length. Most practices are free, however fans will need to obtain a ticket for admission at chiefs.com. Fans can enjoy interactive opportunities, a kids zone with inflatable football themed games, onsite concessions and opportunity to buy Chiefs Merchandise. Plenty of paved parking spots for a nominal fee. The specific daily schedule is usually released in mid June.

AUGUST

ST. PATRICK'S FIESTA

Second Weekend in August
St. Patrick's Catholic Church,
1723 S 12th St.
816-279-2594
stpatrickstj.org
The fiesta begins with a queen coronation and variety show. Lots of Mexican food, Cascarones, carnival rides, music and lots more.

ST. JOSEPH AREA SPORTS HALL OF FAME

Fourth Sunday in August
1201 N. Woodbine Rd.
stjomosports.com/hall-of-fame
This annual event is meant to recognize individuals and teams that have made significant contributions to the rich tradition of sports history in St. Joseph and Buchanan County. Inductees are either born in Buchanan County, made their sports career and/or accomplishments in Buchanan County, or are actively contributing to sports in Buchanan County at the present time. This event is organized annually by the St. Joseph, MO Sports Commission.

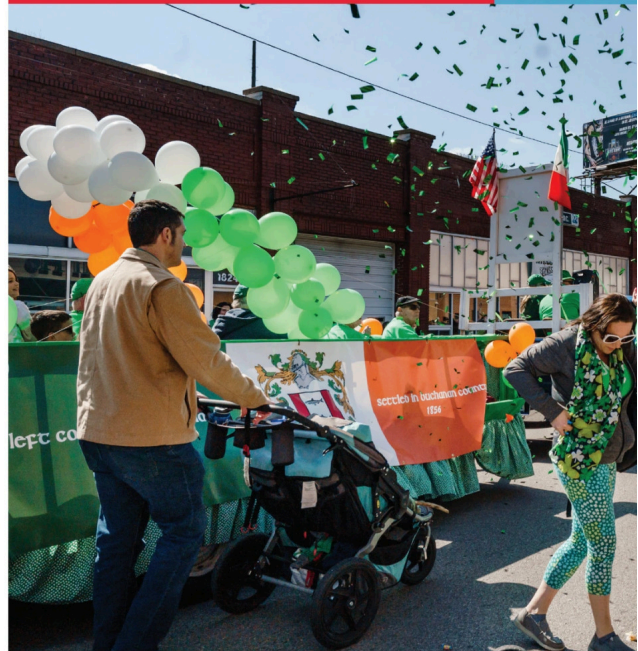
SEPTEMBER

ST. JOE PRIDE FESTIVAL

Second weekend in September
Downtown St. Joseph
Felix Street Square, 701 Felix St.
facebook.com/stjoepride
This non-profit event, entirely run by volunteers celebrates the contributions of the LGBTQ+ community in St. Joseph and the surrounding area, as well as offer support and fellowship for LGBTQ+ people and their friends and family. Includes parades, drag shows, concerts, food and merchandise vendors, community resource booths, activities for kids and much more.

SOUTHSIDE FALL FESTIVAL

Third weekend in September
8th & Hyde Park Ave. in Hyde Park
816-273-3370
facebook.com/southsidefallfestival
This annual event is dedicated to family entertainment with craft and food booths, kids' rides and activities, on-going entertainment, fireworks and a parade in an alcohol-free environment. Free admission.





Sound of Speed Airshow



St. Patrick's Day Parade



St. Joseph Marathon



Beer Walk for the Arts in
Downtown St. Joseph



Beer Walk for the Arts





**URGENT CARE
EXPRESS**

**St. Joe's Premier
Urgent Care**

Hours:
Monday - Friday 8 a.m. - 8 p.m.
Saturday - Sunday 9 a.m. - 5 p.m.


816-396-9500
4776 Verona Drive, St. Joseph, MO 64506

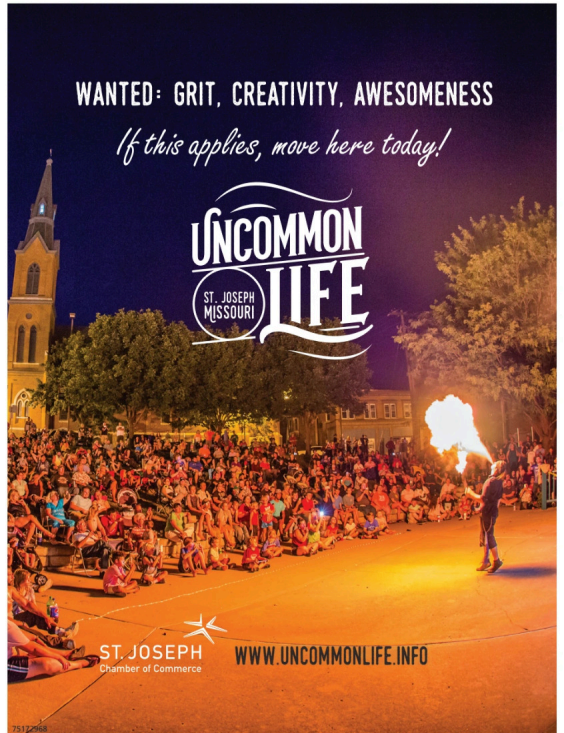
No appointment required I-29 & Exit 50 (169 Hwy.)


75175528

WANTED: GRIT, CREATIVITY, AWESOMENESS

If this applies, move here today!







ST. JOSEPH
Chamber of Commerce

WWW.UNCOMMONLIFE.INFO

2017/68

SEPTEMBER CONT.

THE JEWELS OF ST. JOSEPH HOMES TOUR: A SHOWCASE OF ARCHITECTURAL GEMS

Third Sunday in September
The Shakespeare Chateau,
809 Hall St.
816-232-2667

This annual tour showcases the extraordinary historic architecture of St. Joseph. Each year, 6 or more homes are featured, plus a historic commercial building. \$20 per person in advance, \$25 on tour day if tickets are still available. (This tour has sold out in the past, so advance tickets are advised). Call for Tickets on or after August 1, 816-232-2667 or stay@shakespearechateau.com.

BLUEGRASS BATTLES HUNGER CONCERT

Fourth weekend in September
Coleman Hawkins Park at
Felix Street Square, 701 Felix St.
bluegrassbattleshunger.org
Bluegrass Battles Hunger is an annual concert event in support of Second Harvest Community Food Bank. The event is free to attend, and patrons are encouraged to bring cash or non-perishable food donations.

ST. JOSEPH, MISSOURI MARATHON

Fourth Saturday in September
911 Frederick Ave.
(816) 233-6688
stjomosports.com/marathon

The largest race in recent memory for St. Joseph will be held on September 23, 2023. This Boston Marathon qualifying race will pass by numerous historic landmarks throughout town. Whether you choose to run a full, half, 10K, 5k or relay, the inaugural St. Joseph, Missouri Marathon is one you won't want to miss. Pick the distance that is right for you, view the route and sign up at stjomosports.com/marathon.

OCTOBER

PUMPKINFEST

First weekend in October
Pony Express Museum, 914 Penn St.
816-279-5059 or 800-530-5930
ponyexpress.org
Free family arts festival; entertainment, children's costume parade, festival rides, games, crafters and food. See the lighting of "Great Pumpkin Mountain;" hundreds of carved, electrically lit pumpkins magically come to life.

HAUNTED HARRIS-KEMPER WALKING TOUR

Second weekend in October
(816) 385-2217
HarrisKemper1986@gmail.com
facebook.com/HauntedHK
The Haunted Harris Kemper Walking Tour gives visitors a glimpse into the often haunted history of our historic neighborhood through "live talking porches."



Griff Up Downtown

ST. JOSEPH AUCTION AND ANTIQUE MARKET

Voted Area's Best Antique Mall
7 years in a row!




Over 20,000 sq ft of
Timeless Treasures!
Clean • Organized • Uncluttered

Open 7 Days a Week 10am – 5pm
3600 S. Leonard Rd, St. Joseph, MO 64503
I-29, Exit 44, across from Stetson Hat Outlet

816-279-4310



Check us out on  facebook.com/stjosephantiques

LEAVENWORTH




Explore our history, museums,
monuments, international foods,
shopping and so much more...

VisitLeavenworthKS.com



Voices of the Past



Wyeth-Tuttle Mansion

OCTOBER CONT.

VOICES OF THE PAST

First Thursday and Friday in October
824 Mount Mora Rd.
816-232-8471
mountmora.org

Visitors can stroll Mausoleum Row in Mount Mora Cemetery, where 21 of the finest architectural dwellings line the row. Established in 1851, you will experience St. Joseph's past through intriguing stories told by costumed living history characters. Each year the theme and stories are different. Award winning event. Advance tickets only.

DONUT DASH

Third Saturday in October
5K run from Patee House, by Robidoux Row, Mount Mora, and ends at Golden Glaze. Proceeds benefit Robidoux Row, Patee House and Mount Mora Cemetery.

WITCHES' TEA

Last Monday in October
Albrecht-Kemper Museum of Art,
2818 Frederick Ave.
816-233-7003
albrecht-kemper.org
The Albrecht-Kemper Museum of Art will serve up a little spooky fun for Halloween as we host our annual "Witches Tea". This Halloween-themed tea party includes a three-course lunch or a four-course dinner, psychic readings and of course witches. There will be malevolent mind-readers, putrid prizes, wayward witches, vicious vendors and sickening surprises. Costumes strongly encouraged, and you should definitely wear your best hat.

NOVEMBER

SUGARPLUM FESTIVAL

Second Weekend in November
Albrecht-Kemper Museum of Art,
2818 Frederick Ave.
816-233-7003
albrecht-kemper.org
Kick off the holidays at the Albrecht-Kemper Museum of Art. A St. Joseph tradition dating back 40 years, this artisanal holiday fair is open to the public and features more than 30 of the region's most unique vendors. Festivities include a special preview night, deck the halls silent auction, a gourmet lunch in the AKMA Cafe and much more Sugarplum fun!

HOLIDAY PARK & SOUTH POLE

Opens Friday after Thanksgiving
Krug Park, 3500 St. Joseph Ave. & Hyde Park, 8th & Hyde Park Ave.
816-271-5500



Stjoemo.info
Over 100,000 visitors annually drive through the amazing winter wonderlands, which feature holiday displays and thousands of twinkling lights. Largest holiday display in Northwest Missouri. Free admission, donations are appreciated.

DOWNTOWN HOLIDAY EXPERIENCE 2025

Saturdays in November and December throughout Downtown St. Joseph, Felix Street Square
downtownstjoemo.com
We invite you to bring your friends and family downtown to experience all the fun activities, great places to eat and unique shops with specialty gift options for everyone on your list. There will be activities and special events every Saturday beginning with the "Lighting Ceremony" and fireworks show at Coleman Hawkins Park in Felix Street Square. Carriage rides will take visitors through our city streets, showcasing our historic architecture and marvelous holiday window displays. Providing a uniquely safe experience for families with our Santa Claus, Winter Princess, and their elves and helpers in a safe, outdoors, and socially distanced manner. Check our Facebook page at facebook.com/downtownstjoseph or website downtownstjoemo.com for more details.

DECEMBER

BREAKFAST WITH SANTA AND GINGERBREAD WORKSHOP

First Saturday in December
Albrecht-Kemper Museum of Art,
2818 Frederick Ave.
816-233-7003

albrecht-kemper.org
Ring in December with Santa Claus at the Albrecht-Kemper Museum of Art! Santa's pancakes are served hot off the griddle with sausage, juice, coffee, and a special treat for the kids. After dining with Jolly Old Saint Nick, participate in a special Gingerbread House-decorating workshop in the museum classroom. Reservations are required for both breakfast and the workshop.

MAYOR'S CHILDREN'S CHRISTMAS PARTY

Second Saturday in December
Bode Ice Arena,
2500 Southwest Pkwy.
816-271-5500
stjoemo.info

This annual event includes a visit from skating Santa, a short figure skating presentation, a welcome from the Mayor of the City of St. Joseph, free ice skating for all participants, and refreshments at the Bode ice skating rink.



Santa at the Mansion

St. Joseph
COMMUNITY
CHORUS

CONGRATS!

45
Years



SJCC is looking forward to celebrating their 45th season in 2025-26

Check our website for updates about our upcoming season!
www.stjochorus.org

2024-2025
Season Sponsor



Financial assistance provided by these sponsors:

75175494

SPORTS & RECREATION



Other outdoor recreation can be found on our website at StJoMo.com under sports and recreation.



River Bluff Trails

ST. JOSEPH PARKS AND RECREATION

1920 Grand Ave.
816-271-5500
stjoemo.info
www.facebook.com/stjoemoparks
The St. Joseph Park System, listed on the National Register of Historic Places, is comprised of over 1,500 acres, 26 miles of parkways and boulevards, and contains 53 parks and related facilities. For a complete list of locations and maps, visit www.stjoemo.info.

BARTLETT PARK

Renick to Duncan, 30th to 32nd
816-271-5500
stjoemo.info
Barklett Park can be found in the center of the trail system that spreads north and south throughout St. Joseph. It includes two ballfields, inclusive playground, a play path, an inclusive tree house, numerous picnic and shelter areas, a new 9-hole entry level disc golf course and accessible restroom facilities.

BILL MCKINNEY HERITAGE PARK SOFTBALL COMPLEX

2202 Waterworks Rd.
816-271-5518 or 816-271-5500
stjoemo.info
The complex includes four 300' and

one 250' irrigated fields, covered dugouts, scoreboards, "state-of-the-art" MUSCO Lighting, "chair-back" seating (400+), and bleacher seats (1,200), a playground area, and 6,000 sq. ft. pavilion with concessions, restrooms and shaded seating.

BODE SPORTS COMPLEX

2500 South West Pkwy.
816-271-5506
stjoemo.info
facebook.com/bodeicearena
Features an indoor ice skating rink, a six-court outdoor lighted basketball complex, seating, scoreboards and pro-style glass backboards with colored pads. Three lighted outdoor pickle-ball courts and a newer skateboard park complement this complex. For information on party packages and event rentals, call 816-271-5352.

CIVIC ARENA

100 North 4th St.
816-271-4717
stjoemo.info
facebook.com/stjosephcivicarena
The St. Joseph Civic Arena is a 40,000 square foot, multi-purpose facility with portable staging and basketball floor. Concert style seating for 4,200, 19,000 square feet of

unobstructed exhibit space and meeting rooms can accommodate 10-300.

COLEMAN HAWKINS PARK/FELIX STREET SQUARE

7th and Felix
816-271-5500
stjoemo.info
Located in downtown St. Joseph, this beautiful green space provides a gazebo and grassy area perfect for gatherings, concerts and events. An indoor restroom and concessions area are available for rent.

FAIRVIEW GOLF COURSE

33rd & Pacific
816-271-5351
facebook.com/fairviewmunicipalgolfcourse
18-hole golf course offers completely redesigned and expanded clubhouse featuring a banquet facility with catering, concessions, locker rooms, pro shop, patio and decks. Course is Pro 72 with driving range, cart rental and lessons.

FORT SMITH

Corner of Bellevue St. & West Michel St.
816-271-5500
stjoemo.info
Ft. Smith, named after

Colonel Robert F. Smith, was erected in 1861 in the Missouri River bluffs during the Civil War. Includes 4 full-scale reproduction cannons, restored redoubts, lookout point, signage and ordnance shed displaying illustrations of artillery shells used.

HIKE & BIKE TRAILS

816-271-5500
stjoemo.info or stjoemo.info/578/Trails
The Urban Trail System, a network of 10 concrete trails and traditional sidewalks, links the public to neighborhoods, schools, recreational opportunities, shopping, work, and provides an opportunity for general fitness in a safe environment.

HYDE PARK

8th & East Hyde Park Ave.
816-271-5500
stjoemo.info
This 94-acre park features a hard-surface walking trail, skate park, basketball court, six baseball fields, three tennis/pickleball courts, five shelters, a playground and the Liberty Oak Splash Park. The park transforms into the "South Pole" from the Friday after Thanksgiving - January 1.



Riverwalk and Remington Nature Center

**JOYCE RAYE PATTERSON
50+ ACTIVITY CENTER**
100 South 10th
816-271-4666

facebook.com/jractivitycenter
An attractive 22,200 square foot facility for persons over the age of 50. Services at the center include fitness center with cardio and resistance weight machines, a cafeteria open to all ages on Tuesday through Friday, fitness classes, retirement group meetings, bridge, 10 point pitch games, billiards, snooker, 8-ball, table shuffleboard, information and referral services, circuit training room, educational presentations and dances.

KING HILL LOOKOUT
101 King Hill
816-271-5500
stjoemo.info

Overlooking the historic Missouri River and industrial area of the city is King Hill Lookout. This area provides a breathtaking view and has an area for parking.

KRUG PARK
3500 St. Joseph Ave.
816-271-5500
stjoemo.info

165-acre park has unique architecture, a natural-bowl amphitheater, rose garden &

gazebo, 3 shelters, picnic and playground areas. The park transforms into Holiday Park, a winter wonderland of displays, lights, and jolly elves from the Friday after Thanksgiving – January 1.

**LIBERTY OAK SPLASH
PARK AT HYDE PARK**
402 East Hyde Park Ave.
816-271-5500
stjoemo.info

Newly opened in 2021, the Liberty Oak Splash Park boasts five water features, seating, restrooms, and dry playground

equipment. Admission is free and open to all visitors. Open from May – September, weather permitting.

NORTHSIDE COMPLEX
3600 St. Joseph Ave.
816-271-5500
stjoemo.info

Northside Complex is located on the Northwest side of St. Joseph, adjacent to Krug Park. Includes a playground, basketball courts, one softball field, two bantam football fields, two horseshoe courts, a handball court, and a shelter house.



Catfish from
Missouri River

historic downtown st. joseph, mo

**FIVE DINNER SHOWS
FOUR BROADWAY MUSICALS
THREE SEASONS
TWO HISTORIC VENUES
ONE PREMIERE THEATRE COMPANY**

**ROBIDOUX
RESIDENT
THEATRE**

www.rrtstjoe.org • 816.232.1778
missouri theatre • ruby theatre

Robidoux Row Museum

It started here...

Step back to the 1850s in the historical river town of Saint Joseph, Missouri, by visiting the Saint Joseph Historical Society's Robidoux Row Museum.

- Joseph Robidoux built Robidoux Row to help house those traveling West to California, Oregon and Santa Fe.
- Joseph Robidoux was our city's founder and a major benefactor, donating the ground on which our courthouse stands today, as well as a number of downtown churches, and other entities throughout the city.
- Joseph Robidoux hammered in the final spike of the Hannibal-Saint Joseph Railroad, the service traveling the farthest west at the time.

**Buy One Ticket
for Museum Admission
Get One Free**

Regular ticket price: Adults, \$4;
Seniors, \$2; Students 6-18, \$1;
5 and under, free.

Coupon valid through 12-31-25

Promo code CVB2025



ROBIDOUX ROW MUSEUM

219 East Poulin Street, Saint Joseph, MO 64501

816-232-5861

www.robidouxrowmuseum.net

March - December | Tuesday - Saturday | 10 a.m. - 4 p.m.
(Closed January - February*) *Event space rentals still available



NOYES ATHLETIC COMPLEX

300 South Noyes Blvd.
816-271-5500

stjoemo.info

This 23-acre complex includes 12 lighted tennis courts, 16 lighted horseshoe courts, lighted ball field, and a track surrounding Central High School football field. The tennis, horseshoe courts and ballfield feature appropriate seating, concessions and locker room facilities.

PATE PARK

909 Penn St.
816-271-5500

stjoemo.info

Includes historic marker from the 100th anniversary of the Pony Express, Civil War memorial, refurbished antique locomotive engine, gazebo, shelter, fountain and playground. Site of Pony Express Pumpkin Fest.

THE PARKWAY

26-miles through town
816-271-5500

stjoemo.info

The St. Joseph Parkway winds through the city of St. Joseph for 26 miles. Developed in 1918 by architect George Burnap, St. Joseph was one of the first cities in the United States to develop an imaginative and comprehensive parkway plan. Popular for hiking and biking activities, the completed system connects principal parks and recreation facilities throughout the city. It was placed on the National Register of Historic Places in 1995. The Parkway runs roughly, from Northwest to Southwest through the city from Krug Park to Hyde Park; connected by Noyes Blvd. An 18-hole disc golf course runs along Southwest Parkway from Duncan St. to an area northeast of 28th St.

PHIL WELCH STADIUM

2600 South West Parkway
816-279-7856

stjoemustangs.com

Built and dedicated in 1939, Phil Welch Stadium is one of the few old and unique baseball stadiums in the nation. It serves as the home to the St. Joseph Mustangs Baseball organization.

RIVER BLUFF TRAILS PARK

Intersection of West Highland Ave.
& McArthur Dr.
816-271-5500

stjoemo.info

The River Bluff Trails Park features over 12 miles of primitive hiking and mountain biking trails like those found in Northern Arkansas. From youth to expert, there are trails for every skill level anchoring the south end of River Bluff Trails Park, the Bike Playground at Wyeth Park includes trails and obstacles for every ability of rider and hiking trails for those not on wheels. The area features: a 10,000 square foot dirt pump track, 1000 square foot kids pump track, custom fabricated skills obstacles, a drop zone, pump and jump session lines, the bicycle butterfly, and 2.5 miles of multiuse biking and hiking trail along the loess bluffs within the park. An adaptive trail is on the north side of Highland Ave. for people with adaptive equipment. Parking is available at Remington Nature Center, at the intersection of Highland Ave. and MacArthur Drive, and the parking lot on Huntoon Road near the water towers.

ST. JOSEPH REC CENTER

2701 South West Parkway
816-271-5512

stjoemo.info

facebook.com/thestjosephreccenter
Includes a full-service fitness center with cardio machines, resistance weight machines, free weights, 3 gymnasiums, indoor track, and activity rooms. Cardio and fitness classes. Volleyball, pickleball and youth basketball leagues, personal training, childcare, and more. Free Wi-Fi. Activity rooms available for party rentals.

HUSTON WYETH PARK

From Main St. take Poulin west to top of Hill
816-271-5500

stjoemo.info

Houston Wyeth Hill is a scenic overlook high upon the Missouri River bluffs. It offers a panoramic view of the Missouri River and Kansas where thousands of pioneers crossed the Missouri River on their way to Oregon and California.

OUTDOOR RECREATION & CONSERVATION AREAS

MISSOURI DEPARTMENT OF CONSERVATION - BUCHANAN COUNTY

701 James McCarthy Dr.
816-271-3100

mdc.mo.gov

For a complete list of conservation areas and accesses, please go to the website or call the regional office.

BLUFFWOODS CONSERVATION AREA

Nine miles south of St. Joseph

off Hwy. 59

Nearly 2,300 acres (mainly forestland) with a scenic overlook, 2.5 mile hiking trail and picnic areas.

CAROLINE SHERIDAN LOGAN WILDLIFE AREA

From St. Joseph take I-229 north to Highland Avenue. Proceed east on Highland, then north two miles on Huntoon.

Directly adjoins Sunbridge Hills Conservation Area. Forty acres to explore; hiking, bird watching, beautiful fall foliage.

FRENCH BOTTOMS RIVER ACCESS

French Bottom Access in St. Joseph is west of I-229, travel 0.25 mile on Highland to McArthur Drive then

0.25 mile to area.

Boat ramp access to Missouri River.

MARK YOUNGDAHL URBAN CONSERVATION AREA

36th St. between Faraon/Jules and Messanie streets in St. Joseph. 85 acres of fields and forestland with 2.5 miles of hiking trails.

PIGEON HILL CONSERVATION AREA

I-29 south out of St. Joseph. Go east on Highway 169 0.25 mile, south on Route FF for 2.5 miles, west on Route O 1.5 miles, and south on SE

50 Road to the area.

More than 342 acres in Buchanan County, south of St. Joseph. Archery and firearms target ranges.

SUNBRIDGE HILLS CONSERVATION AREA

From St. Joseph take I-229 north to Highland Avenue. Proceed east on Highland, then north two miles on Huntoon.

This 190-acre area has numerous redbud trees, maples and oaks. And overlooks the Missouri River with excellent hiking trails.



St. Joseph Mustangs



Krug Park

OTHER RECREATION

BELT ENTERTAINMENT

210 North Belt Hwy.
816-233-1054

www.belt-entertainment.com

Belt Entertainment is an entertainment facility that features bowling, laser tag and a modern redemption arcade with a great selection of food and beverage. Available for all occasions such as team building, social events, birthday parties, fundraisers and family adventures. Belt Entertainment is where you can Eat More, Drink More & Play More!

B&J SKATE CENTER

6421 North Belt Hwy.
816-364-1314

bjskate.com

B&J Skate Center strives to offer a fun family environment that everyone can enjoy. A variety of ways to skate includes public sessions, private parties, school parties, company and church events. See website for details.

CASTLE BRIDGE EVENT CENTER

8403 US Hwy 59 South

St. Joseph, MO 64504

Phone: 816-364-4640

EVERY WEDNESDAY, Eats & Jams.

Bar 3:30pm-close. Meals 5-7:30pm.

Live music 6-8pm. No cover charge.

COOL CREST GARDEN GOLF

1400 North Belt Hwy.

75-years after opening as one of the first businesses north of Frederick Ave. on Belt Highway, Cool Crest remains one of the premier mini-golf locations in the region. Open daily April through October.

COPPER HILL GOLF CLUB

6480 South West U.S. Hwy. 169

816-253-9603

copperhillgolfclub.com

Updated 9 hole Par 3 course, 18 hole mini golf, driving range including 26 bays to hit from either in the grass, on mats or even with a covered barn, batting cages and a brand

new wine bar to wine'd down after a fun day!

GRIFFON INDOOR SPORTS COMPLEX

4525 Downs Dr.

816-271-4481

gogriffons.com

Facility serves Griffon football, softball, baseball, soccer, men's golf and women's golf teams, and is the summer training camp home of the Kansas City Chiefs. Features a full 120-yard turf indoor field, a state-of-the-art locker room, weight training facility, 120 seat theatre, and athletic training rooms.

JOE TOWN MINI GOLF

5320 North Belt Hwy.

joetownminigolf.com

18-holes of mini golf are operational from mid-April through mid-October. Daily operation is weather permitting. Ages 6 and up are \$8. Age 3-5 are \$6. Joe Town Mini Golf also offers a wheelchair route (10 holes) for \$5. A 10% discount for groups of 25 or more golfers.

LAKE CONTRARY

Lakefront Lane in South St. Joseph

Offers shelters and picnicking, playground, horseshoe pits, basketball, volleyball and baseball fields.

LEWIS & CLARK STATE PARK

801 Lake Crest Blvd., Rushville, MO

816-579-5564

mostateparks.com/park/lewis-and-clark-state-park

Lewis & Clark noted great quantities of fish, geese and goslings here in 1804, and it's still a great place for bird watching. Interpretive trail of Lewis & Clark, camping, and picnicking.

MISSOURI WESTERN STATE UNIVERSITY RECREATION

4525 Downs Dr.

816-271-4124

missouriwestern.edu/recreation

Explore nature trails, fish or picnic by one

of our ponds, play our 18-hole disc golf course or test your marksmanship on the trap range on Missouri Western's beautiful campus.

MISSOURI WESTERN WSPRING SPORTS COMPLEX

4525 Downs Dr.

816-271-4481

gogriffons.com

Seating capacity of 500 plus overflow area. The playing surface features an entirely artificial turf field and a natural grass outfield. Dugouts are lighted and heated for cold weather games. Field is 400 feet to center field. Also includes softball field with seating capacity for 300 fans.

MOILA GOLF COURSE

701 North Noyes Blvd.

816-232-9681

www.moila.org

Open to public, with membership available. Practice Range, putting green and short game practice area and swimming pool, open seasonally

REVOLUTIONS LANES AND FUN CENTER

6938 King Hill Ave.

816-259-3814

revolutionslanes.com

Offers open bowling every day during all open business hours, party packages, arcade games, leagues, and tournaments. Concessions include fresh pizza made from scratch, tenderloins, burgers and more. See website for details.

RICKY DEAN'S

3620 North Village Drive

Ricky Dean's is a 6-attraction, state-of-the-art, indoor/outdoor entertainment facility with batting cages, blacklight mini golf, outdoor pickleball courts, outdoor rock climbing tower, 9D cinema VR hydraulic rides, and bumper boats.

ST. JOSEPH COUNTRY CLUB GOLF COURSE

50 Ridgeland Rd.

Country Club, MO 64505

816-233-0241

stjosephcountryclub.com

The Saint Joseph Country Club is a private club under new ownership as of 2021. Our private 18-hole championship golf course features newly renovated practice facilities include driving range, putting green and short game practice area. Other renovations include a resort-style full service heated pool for lounging, state of the art fitness center, Grand Ballroom, an unparalleled luxurious Bridal Suite, and multiple elegant event spaces to accommodate your next celebration or meeting. Our 2022 kitchen remodel features a new Chef's cooking suite and Chef's table for an up-scale private dining experience with our Executive Chef.

ST. JOSEPH MUSTANGS AT PHIL WELCH STADIUM

2600 South West Parkway

816-279-7856

stjoemustangs.com

One of the top summer collegiate summer baseball teams in the nation, the Mustangs play at historic Phil Welch Stadium in May, June and July. You can't miss out on games on the field between innings, food and drink discounts, nightly promotions, and fireworks every Saturday-the Mustangs are your home for affordable family fun!

THE AXE FACTOR

1302 Frederick Ave.

816-396-8503

theaxefactorstj.com

An indoor axe-throwing venue. Great for date nights, corporate parties, team building exercises, bachelor and bachelorette parties, and more. Reservations can be made online.



Other Locations

- ★ St. Joseph Convention & Visitors Bureau
- ★ St. Joseph Visitors Center
- Missouri Western State University
- Mosaic Life Care
- Mark Youngdahl Conservation Area
- Shoppes at North Village
- Rosecrans Memorial Airport

ST. JOSEPH MISSOURI

CITY MAP

- Parks
- Green Spaces
- Rivers
- City Boundary
- Historic Routes
- Trails
- State Borders

Attractions

- 1 Albrecht-Kemper Museum of Art
- 2 Bartlett Park
- 3 Black Archives Museum
- 4 Bode Ice Arena
- 5 Buchanan County Courthouse
- 6 City Hall
- 7 Civic Arena
- 8 Fairview Golf Course
- 9 Fort Smith Park
- 10 Glore Psychiatric Museum
- 11 InspireU
- 12 Jesse James Home
- 13 Lovers Lane Historic Landmark
- 14 Missouri Theater
- 15 Mount Mora Cemetery
- 16 Patee House Museum
- 17 Phil Welch Stadium
- 18 Pony Express Statue
- 19 Pony Express National Museum

- 20 Remington Nature Center
- 21 Robidoux Row Museum
- 22 Ruby Theatre
- 23 St. Jo Frontier Casino
- 24 St. Joseph Museums
- 25 Walter Cronkite Memorial
- 26 Wyeth Tootle Mansion

Accommodations

- 1 AmeriStay Inn
- 2 Budget Inn
- 3 Candlewood Suites
- 4 Drury Inn & Suites
- 5 Fairfield Inn by Marriott
- 6 Hampton Inn
- 7 Holiday Inn Express & Suites
- 8 Motel 6
- 9 My Place Hotel
- 10 Quality Suites
- 11 Stoney Creek Hotel & Conference Center

Bed & Breakfasts

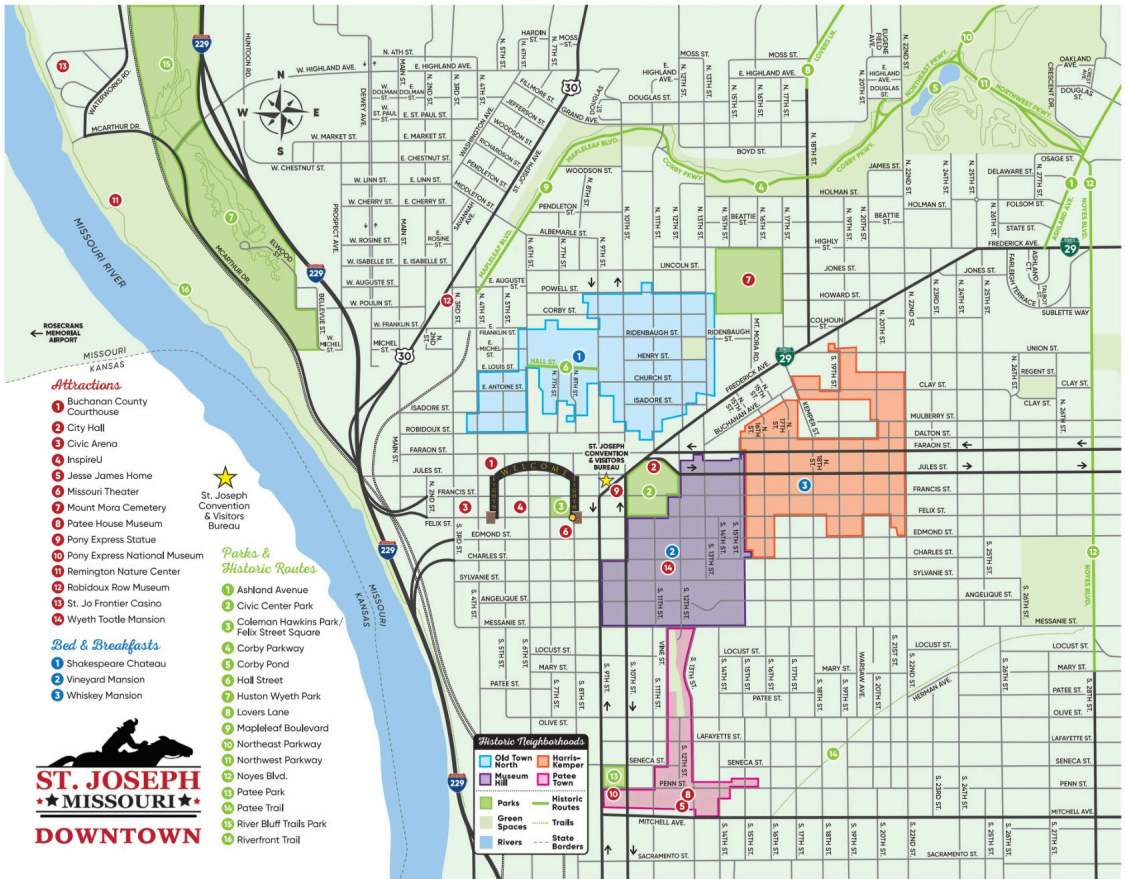
- 1 Shakespeare Chateau
- 2 Vineyard Mansion
- 3 Whiskey Mansion

Camping & RV Parks

- 1 AOK Campground
- 2 Beacon Campground
- 3 Lewis and Clark State Park
- 4 Sharp RV Park

Parks & Historic Routes

- 1 Ashland Avenue
- 2 Civic Center Park
- 3 Coleman Hawkins Park / Felix Street Square
- 4 Copper Hill Golf Club
- 5 Corby Dog Park
- 6 Corby Parkway
- 7 Corby Pond
- 8 Fort Smith Park
- 9 Hall Street
- 10 Heritage Park Softball Complex
- 11 Huston Wyeth Park
- 12 Hyde Park
- 13 Krug Park
- 14 Lovers Lane
- 15 Northwest Parkway
- 16 River Bluff Trails Park
- 17 Riverfront Trail
- 18 Southwest Parkway

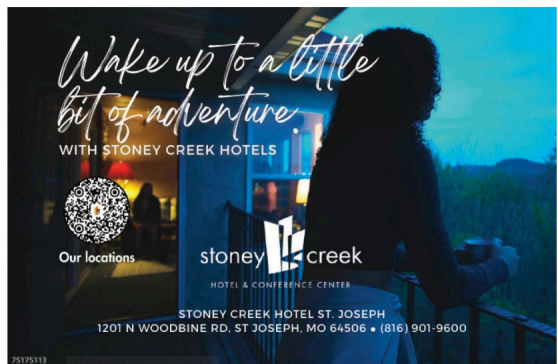


TOUR HOMES

| Tours by appointment only. | WEB SITE | DESCRIPTION | TOUR ADMISSION | MAP LOCATION |
|------------------------------------------------------------------------------------------------------|--------------------------------------------------------------------|-------------------------------------------------------------------------------------------------------------------------------------------------------------------------------------------------------------------------------------------------------------------------------------------------------------------------------------------------------------------------------------------------------------------------------------------------------------------------------------------------------------------------------------------------------------------------------------------|----------------|--------------|
| J.C. WYATT HOUSE 809 Felix St., St. Joseph, MO 64501 816-676-1004 | jcwatt.net | Built in 1891 for John Cavan Wyatt, a well-known St. Joseph merchant, the home showcases the Golden Age of opulent mansions of the Victorian Era. Take a step back in time and enjoy the history and luxuries of this era in Mr. Wyatt's restored home. Lunch or Dinner is prepared fresh daily to order. Reservations are required and must be made in advance. Available for special events and tours by pre-arranged reservations. Top rated private dining establishment in St. Joseph on Trip Advisor. For more information, www.jcwatt.net. | \$12 | 20 |
| SHAKESPEARE CHATEAU 809 Hall St., St. Joseph, MO 64501 816-232-2667 | shakespearechateau.com | Situated in the Hall Street Historic District, the Shakespeares Chateau is a palatial gilded-age mansion still flush with original woodwork, stained glass, and lighting. Stay in our comfortable B&B rooms, host a wedding, special event or business meeting in the elegant parlors, or join us for an informative tour to learn about the history, architecture, and extraordinary interior detailing. We also offer upgraded tours to include refreshments; please call for pricing. Tour groups of any number are welcome, by reservation only. 2015 Preserve Missouri Award Winner. | \$10 | 13 |
| VINEYARD MANSION AND CARRIAGE HOUSE 1125 Charles St., St. Joseph, MO 64501 818-968-4706 | vineyardmansion.com | This Romanesque Revival-style house was built in 1890, by the famed architectural firm of Eckel and Mann, for B.R. Vineyard, who was a prominent attorney in St. Joseph, MO. Although the house was divided into apartments in the 1940s, it has been meticulously restored back to its original single family use and is now being used as an alternative B&B for guests who want to experience the splendor of the Gilded Age. The Vineyard Mansion property is located within the Museum Hill Historic District, an area well-known for its stunning, Victorian-era homes. | \$10 | 14 |
| WHISKEY MANSION B&B 1723 Francis St., St. Joseph, MO 64501 816-676-1529 | whiskymansion1885.com | Built in 1885, this beautifully restored B&B and Tour Home lies in the heart of historic St. Joseph. Perfect for weekend getaways, intimate wedding ceremonies, corporate lunches, reunions, or any special events. Tours by reservation, with a minimum of 12 people. This is a unique venue for tour buses, business meetings, or family gatherings looking for a Historic Victorian Mansion in the heart of St. Joseph's Old Town. Generous bus access. | \$10 | 15 |

ACCOMMODATIONS

| HOTELS & MOTELS | | WEB SITE | DESCRIPTION | POOL <small>(Indoor/Outdoor)</small> | BAR/LOUNGE | UNITS | PET FRIENDLY | ACCESSIBLE ROOMS | MAP LOCATION |
|---------------------------------------------------------------------------------------|----------------------------------------------------------------------------------------|----------|-----------------------------------------------------------------------------------------------------------------------------------------------------------------------------------------------------------------------------------------------------------------------------------------------|-----------------------------------------|------------|-------|--------------|------------------|--------------|
| AMERISTAY INN 4502 SE Hwy. 169 (I-29 and 169 Hwy.) 816-232-2345 | | | Free breakfast, free local calls, HBO, Free WiFi, Guest Laundry. | OD | | 59 | ★ | ♿ | 1 |
| BUDGET INN 1328 N. Belt Hwy., 816-248-7296 | | | The Budget Inn is an economy class hotel property located in St. Joseph. | | | 55 | | ♿ | 2 |
| CANDLEWOOD SUITES 3505 N. Village Drive, 816-232-2600 | candlewoodsuites.com/stjosephmo | | Free WiFi, gazebo grill, Lending Locker, Lending Library, free laundry, 24 hour fitness center, 100% smoke free. HBO, Blu-Ray in every room. | | | 80 | ★ | ♿ | 3 |
| DRURY INN & SUITES 4213 Frederick Blvd. 816-364-4700, 800-378-7946 | druryhotels.com | | Free Full Hot Breakfast, Evening Free Hot Food & Cold Beverages (Beer, Wine, Mixed Drinks & Soft Drinks), Free Fresh Popcorn & soda (4-8 p.m. daily), Free WiFi, Indoor Pool & Whirlpool, Microwave & Refrigerator in all rooms, Fitness Center, Guest Laundry. 100% Satisfaction Guaranteed. | ID | | 132 | ★ | ♿ | 4 |
| FAIRFIELD BY MARRIOTT 4779 Tuscany Dr. 816-232-2700 | marriott.com/stjfi | | Brand New Property, Complimentary hot breakfast, free WiFi, indoor pool, 24 hr. fitness center, guest laundry, business center, The Corner Market, 100% Smoke free, DIRECTV, internet TV with Netflix and HBO Now. | ID | | 108 | | ♿ | 5 |
| HAMPTON INN 3928 Frederick Ave. 816-390-9300, 800-HAMPTON | hamptoninn.com | | Free WiFi, indoor pool and spa, coffee makers, irons, Business Center, Fitness Center, deluxe complimentary hot continental breakfast. Microwave and refrigerator in all rooms. | ID | | 59 | | ♿ | 6 |
| HOLIDAY INN EXPRESS & SUITES 3600 North Village Dr., 816-232-2500 | holidayinnexpress.com/stjosephmo | | Wireless Internet, 42 inch flat screen TVs, microwaves, refrigerators, business center, guest laundry, meeting space and deluxe suites are available. Also has heated pool and Express Start Breakfast Bar. | ID | | 97 | | ♿ | 7 |
| MOTEL 6 4021 Frederick Ave., 816-232-2311 | motel6.com | | Free WiFi, local calls, HBO, Outdoor pool. Pet friendly with no extra fee. Handicap rooms and with ADA Vending/laundry facilities. Handicap accessible. | OD | | 117 | ★ | ♿ | 8 |
| MY PLACE HOTEL 3621 N. Village Dr., 816-557-0050 | myplacehotels.com | | Brand new, pet friendly, extended stay hotel. Offers cozy rooms with full kitchens, free WiFi, 24-hour coffee station and My Store. Business center and onsite laundry. | | | 64 | ★ | ♿ | 9 |
| QUALITY SUITES 917 N. Woodbine Rd. 816-232-6557, 800-228-5150 | choicehotels.com | | 100% smoke free hotel. Large spacious suites & rooms. Free Your Morning Breakfast. 24 hour fitness center. Business center. Guest laundry | ID | | 65 | | ♿ | 10 |
| STONEY CREEK HOTEL AND CONFERENCE CENTER 1201 N. Woodbine Rd., 800-659-2220 | stoneycreekhoteles.com | | Free Hot Breakfast & WiFi, Cocktail Lounge, Heated Indoor/Outdoor Pool, Fitness Center, Business Center. Whirlpool Suites, Family Style Bunk Bed Rooms. Smoke free. | ID/OD | ★ | 129 | ★ | ♿ | 11 |



| | WEB SITE | DESCRIPTION | POOL <i>(Indoor/Outdoor)</i> | BAR/LOUNGE | UNITS | PET FRIENDLY | ACCESSIBLE ROOMS | MAP LOCATION |
|--------------------------------------------------------------------------------|------------------------|----------------------------------------------------------------------------------------------------------------------------------------------------------------------------------------------------------------------------------------------------------|---------------------------------|------------|-------|--------------|------------------|--------------|
| BED & BREAKFASTS | | | | | | | | |
| SHAKESPEARE CHATEAU 809 Hall St., 816-232-2667 | shakespearechateau.com | High atop a bluff looking down across the city toward the Missouri River. Comfortable sleeping rooms, each one beautifully appointed with fabulous art and antiques and luxurious linens. | | | 4 | ★ | | 1 |
| VINEYARD MANSION & CARRIAGE HOUSE 1125 Charles St., 818-968-4706 | vineyardmansion.com | A unique alternative to hotel rooms, offering the privacy and comfort of a home that is enveloped in the grandeur and elegance of the Gilded Age. Carriage House apartment, and 4 suites in the Mansion with a relaxed environment and house privileges. | | | 5 | ★ | | 2 |
| WHISKEY MANSION B&B 1723 Francis St., 816-676-1529 | whiskymansion1885.com | Built in 1885, this beautifully restored B&B and Tour Home lies in the heart of historic St. Joseph. Perfect for weekend getaways, intimate wedding ceremonies, corporate lunches, reunions, or any special events. | | | 4 | | ♿ | 3 |

| CAMPING ACCOMMODATIONS | | | | | | | | |
|-----------------------------------------------------------------------------------------|--------------------------------------------------|---------------------------------------------------------------------------------------------------------------------------------------------------------------------------------------------------------------------------------------|--|--|--|--|--|---|
| AOK CAMPGROUND & RV PARK 12430 County Road 360, 816-324-4263 | aokexit53@gmail.com | 53 full hook-ups available: 20/30/50 amps, pull-throughs. 26 tent sites. Wi-Fi, laundry, showers/restrooms, playground, fishing, swimming pool, dog park, covered wagons (2). From I-29: Exit 53 towards Savannah. | | | | | | 1 |
| BEACON RV PARK 822 S. Belt Hwy., 816-279-5417 | beaconrvstjoe@gmail.com | WiFi, paved streets, pads, patios, restrooms, private showers, recreation room, laundry, RV parts and dumping station. Daily, weekly, monthly rates. | | | | | | 2 |
| LEWIS AND CLARK STATE PARK 801 Lakecrest Blvd., Rushville, MO 816-579-5564 | mostateparks.com/park/lewis-and-clark-state-park | 200 acres with shaded picnic area, shelter overlooking the lake with Lewis & Clark Interpretive plaza and 1 mile loop hiking trail. 70 campsites, full showers, bathrooms & laundry. | | | | | | 3 |
| SHARP RV PARK I-29 Exit 53, South 1/4 mile, 18890 Hwy. 59 816-262-5799 | rikkeec@hotmail.com | Open year-round, 31 sites (10 paved, 21 gravel) with some pull thru, some with patios and shade. All sites have full hook-up with 30/50 amp electric, showers and restroom. Laundromat, WiFi, convenience store and RV repair nearby. | | | | | | 4 |



ST JOSEPH MUSEUMS

3406 Frederick Ave & 1100 Charles Street

- Gloré Psychiatric Museum
- Black Archives Museum
- Archaeology & Native-American Galleries
- Doll Museum
- Wyeth-Tootle Mansion

You Belong Here!

Buy One / Get One FREE on any adult admission with this ad.
Limit 1 per family. Cannot be combined with any other offer. Not Redeemable for cash.




ALLIED ARTS

ALLIED ARTS COUNCIL

816-233-0231 OR stjoearts.org
 Bringing arts and people together through the St. Joseph Sculpture Walk, art festival and events. Supports member organizations via marketing and the annual Arts Fund drive.

MEMBER ORGANIZATIONS:

AMERICAN GUILD OF ORGANISTS

agostjoe.org
 The Guild presents the power and beauty of traditional organ music through workshops and recitals during the year, including an annual recital featuring a nationally or internationally acclaimed organist.

CREATIVE ARTS PRODUCTIONS

capstjoemo.org
capstjoseph@gmail.com
 CAP offers a 3-week summer THEATRE camp for students entering 4th-12th grades. Camp enrollment begins March 1 and is limited to 40-50 participants. Participants learn all facets of a theatre production under the direction of a professional artistic staff, and receive nearly 90 hours of instruction in drama, vocal, dance, and stage crafts. Camp concludes with a weekend performance open to the community. For more information regarding enrollment please visit our website or check out our Facebook page.

Allied Arts Council also resides in our office complex. It serves as the creative center for the arts in St. Joseph.

PERFORMING ARTS ASSOCIATION

816-279-1225
performingarts-saintjoseph.org
 Bringing professional entertainment to the Northwest corner of Missouri for over 42 years. Performing Arts Association presents a varied season of programming including music, theatre and dance. Join us at the beautiful and historic Missouri Theatre in downtown St. Joseph! PAA also provides master classes and educational outreach to the surrounding community.

RIVERSONG

riversongchorus.com
 A 35 member women's a cappella chorus is celebrating over 50 years of ringing chords and stellar performances! Women can attend rehearsals on Thursday night at Wyatt Park Christian Church at 27th & Mitchell from 6:45-9:45 p.m.

MISSOURI THEATER

717 Edmond St.
 816-271-4628
missouritheater.com
 The Missouri Theater is home to Creative Arts Productions, Performing Arts Association, as well as our resident theatre company, the Robidoux Resident Theatre, and the Saint Joseph Symphony. The

ROBIDOUX RESIDENT THEATRE

816-232-1778
rtrstjoe.org
 St. Jo's own nationally-acclaimed and award-winning Robidoux Resident Theatre has produced Broadway-style, live theatre for 40 years at the historic Missouri

Explore all of the arts St. Joseph has to offer at StJoeArts.org/Arts_Calendar.htm



DECADES OF EXCELLENCE IN LIVE ENTERTAINMENT

PERFORMING
Arts
 ASSOCIATION
 AT THE HISTORIC
 MISSOURI THEATRE

TicketsToTheShow.com

Theater! Over 100 stunning performances with gorgeous costumes, fabulous sets and amazing talent are enjoyed by the community every year.

RUBY THEATRE

615 South 10th St.
816-232-1778
rrtstjoe.org

St. Jo's premiere dinner theatre now has a new home in the beautiful Ruby Theatre, featuring a full season of shows produced by the award-winning Robidoux Resident Theatre. Enjoy live theatre, delicious food, full bar, art gallery and fun!

ST. JOSEPH COMMUNITY CHORUS

stjoechorus.org
stjoechorus@gmail.com
An 85-voice all volunteer choir

performing a repertoire ranging from classical to popular selections. SJCC presents several public concerts each year. The chorus also engages in educational and community outreach, providing enriching choral experiences for all ages. Membership in SJCC is open to all those who love to sing.

SAINT JOSEPH SYMPHONY
816-233-7701

saintjosephsymphony.org
The Saint Joseph Symphony has long been considered one of the finest orchestras performing in a city of this size. This professional orchestra offers a full season of concerts September through May, as well as summer chamber concerts, youth concerts, and educational programs.



© Saint Joseph Symphony

Missouri Theater



—ALBRECHT-KEMPER MUSEUM OF ART—

Discover one of the *finest collections* of American art in the Midwest



BUY ONE
ADULT ADMISSION,
GET ONE FREE
WITH THIS AD



2818 Frederick Ave, St. Joseph, MO, 64506
816-233-7003 albrecht-kemper.org

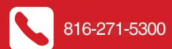


GET YOUR RED ON

HOME OF CHIEFS TRAINING CAMP



City of
St. Joseph
 Missouri



Find Your Way West!

Come celebrate 165 years in 2025



New Native American Exhibit

Adults - \$10 Seniors - \$9
Students - \$5 Kids - \$3
3 and under - Free


ST. JOSEPH
★ MISSOURI ★
www.StJoMo.com

165
Pony Express
NATIONAL MUSEUM

914 Penn Street St Joseph, Mo.
800-530-5930 www.ponyexpress.org

SPECIAL DISCOUNT COUPON

BUY ONE ADULT ADMISSION TO THE LEGENDARY
**PONY EXPRESS
NATIONAL MUSEUM**
AND GET ONE ADMISSION FREE.

Limit one coupon per family. Cannot be combined
with any other offers. Not redeemable for cash.

St. Joseph Convention & Visitors Bureau
911 Frederick Ave.
St. Joseph, MO 64501

PRSRT STD
US POSTAGE
PAID
SAINT JOSEPH, MO
PERMIT #96

LOOKING FOR MORE VISITORS INFORMATION? **TWO** LOCATIONS TO SERVE YOU.

ST. JOSEPH CONVENTION & VISITORS BUREAU

Administrative Offices
and Visitors Center

911 Frederick Avenue,
St. Joseph, MO 64501

816-233-6688 | 800-785-0360

HOURS:

Monday - Friday,
9:00 a.m. - 5:00 p.m.

Closed for Holidays

Small Gift Shop, Visitor Information,
Accessible Restrooms!

VISITOR CENTER

502 North Woodbine Road, Suite B
(Inside East Hills Library)
St. Joseph, MO 64506

816-232-1839

HOURS:

Monday - Friday, 9 a.m. - 3 p.m.,
open Saturday from Memorial Day -

Labor Day 9 a.m. - 3 p.m.

Closed for Holidays

Gift Shop with St. Joseph & Missouri
Memorabilia, Visitor Information,
Accessible Restrooms!



Keep in Touch



@stjomo



@visitsjomo



@VisitStJosephMO



@StJosephMO


ST. JOSEPH
★ MISSOURI ★
STJOMO.COM